

Albany, NY

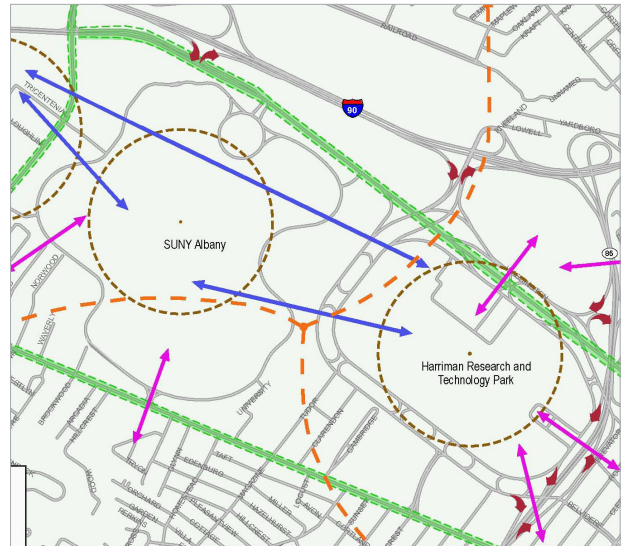
University at Albany – Transportation Linkage Study



The Capital District Transportation Committee (CDTC) retained Nelson\Nygaard to develop a vision for an integrated, multimodal transportation system over a 10-year period and to identify strategies and projects that would help facilitate connections and linkages between sites in the Harriman Campus – University at Albany study area. The vision and strategies were intended to support natural synergy across and between the campuses and ensure that transportation and land use projects enhance the quality of life for everyone living and working in the area.

The study area included three major campuses: the Harriman Research and Technology Park (formerly the Harriman State Office Campus), the University at Albany (the Uptown Campus and the College of Nanoscale Science and Engineering) and the Patroon Creek Corporate Park. It also included the neighborhoods adjacent to the campuses and considered the context of the wider region.

Working closely with the Study Advisory Committee, Nelson\Nygaard conducted extensive fieldwork, inventories of non-motorized conditions, and public workshops to craft a series of short-term and longer-term strategies. Short-term strategies included creating a transportation management association, improving signage and wayfinding, closing portions of the ring roads, alleviating vehicular choke points, and installing bike lanes. Longer-term strategies entailed creating a multimodal transportation spine with bus rapid transit service, reconfiguring sections of the road network, transforming key arterials into mini-“boulevards” and building roundabouts as “anchors” to establish campus gateways.



Project Duration: 2006-2007

Total Budget: \$100,000

Nelson\Nygaard Budget: \$55,000

For more information:

Harriman Campus, University at Albany
One Park Place, Main Floor
Albany, NY 12205

Contact:

Sandy Misiewicz
Senior Transportation Planner
518-458-2161